

survey



what



you



think



about school



we



hope



your



views



improve



school



you



age



0-4

5-8

9-12

13-16

17-21



you



boy



girl



name

---

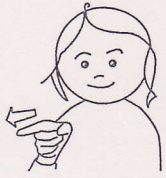


school

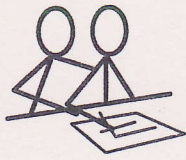


name

---



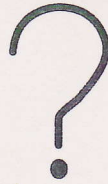
you



support



school



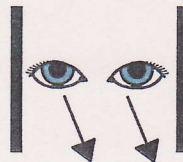
speech and language



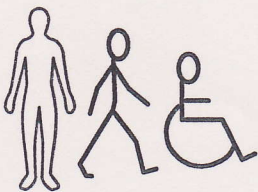
autism



hearing



vision



mobility



different



private





things help me



go



places



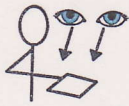
friend helps me



ok myself



adult



show



where



extra



time



mobility



help



I



need



more



help





What



help



you



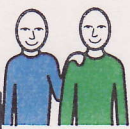
understand



work



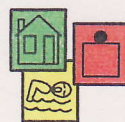
better



friend



help me



symbols



more



time



computer



work



personal



me



communication aid



adult help

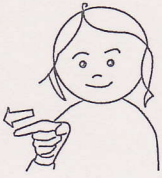


different





how



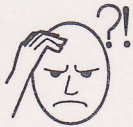
you



feel about



reading



hard



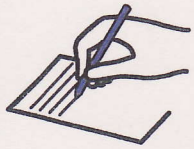
don't know



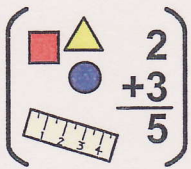
ok



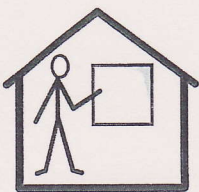
like



writing



maths

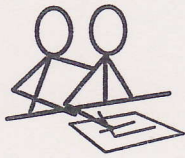


school





how much



help



homework



you have



home



nothing



need



more



ok



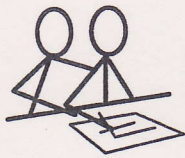
help



lots



how much



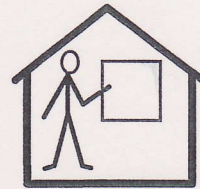
help



homework



you have



school



nothing



need



more



ok

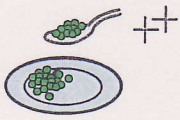
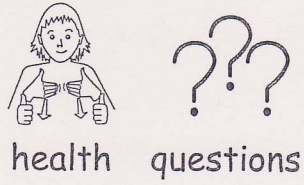


help



lots

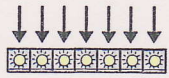




portions



how many



every day



fruit

1

2

3

+



vegetables

1

2

3

+



2



two

best



fruit

---

---

2



two

best



vegetables

---

---



how



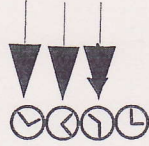
healthy



you



feel



most of time



sick



not



healthy



ok



healthy

